



Monthly Report · October 2021

Day Ahead & Intraday Electricity Markets – Greek Bidding Zone

GENERAL TERMS AND CONDITIONS OF DATA USE

Use of the market report content is under the [EnExGroup website Terms of Use](#).

Summary	4
1. DAM	5
Market Clearing Price (MCP)	
Volumes, technologies and order types	
Interconnections	
2. IDM	17
Market Clearing Prices (MCP)	
Volumes, technologies and order types	
3. DAM & IDM · Aggregated Overview	21
Final Market Schedules	
Domestic Production	
Domestic Consumption	
Domestic Consumption per Voltage level	
4. Annex.....	25
Definitions	
Data Sources	
Market Details	

Summary

Oct 2021
Sep 2021
Oct 2020

DAM

CRIDA1

CRIDA2

CRIDA3



€/MWh

198.32
134.73
47.22

197.46
133.95

196.64
131.18

208.22
136.73



GWh

4,594
4,660
3,789

55.7
35.0

50.7
29.4

29.9
19.0



M €

928.6
635.5
170.04

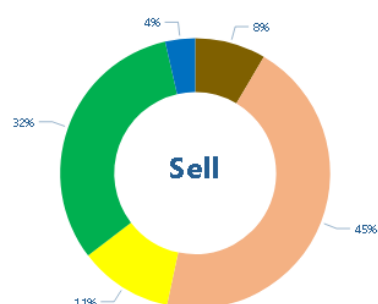
12.54
5.00

10.53
3.75

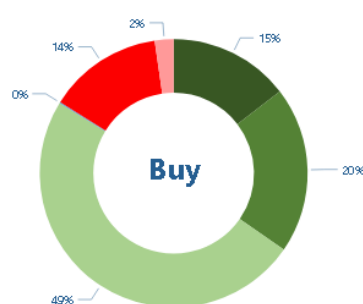
6.60
2.49

Volume mix

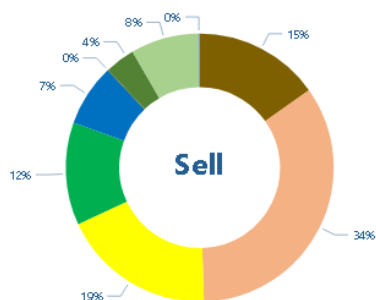
DAM



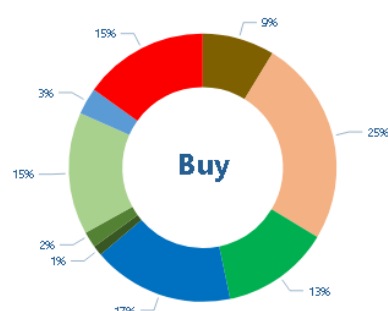
● Lignite
● Gas
● Imports
● RES
● Hydro
● HV Load
● MV Load
● LV Load
● Pumping
● Exports
● Losses



IDM



● Lignite
● Gas
● Imports
● RES
● Hydro
● HV Load
● MV Load
● LV Load
● Pumping
● Exports
● Losses



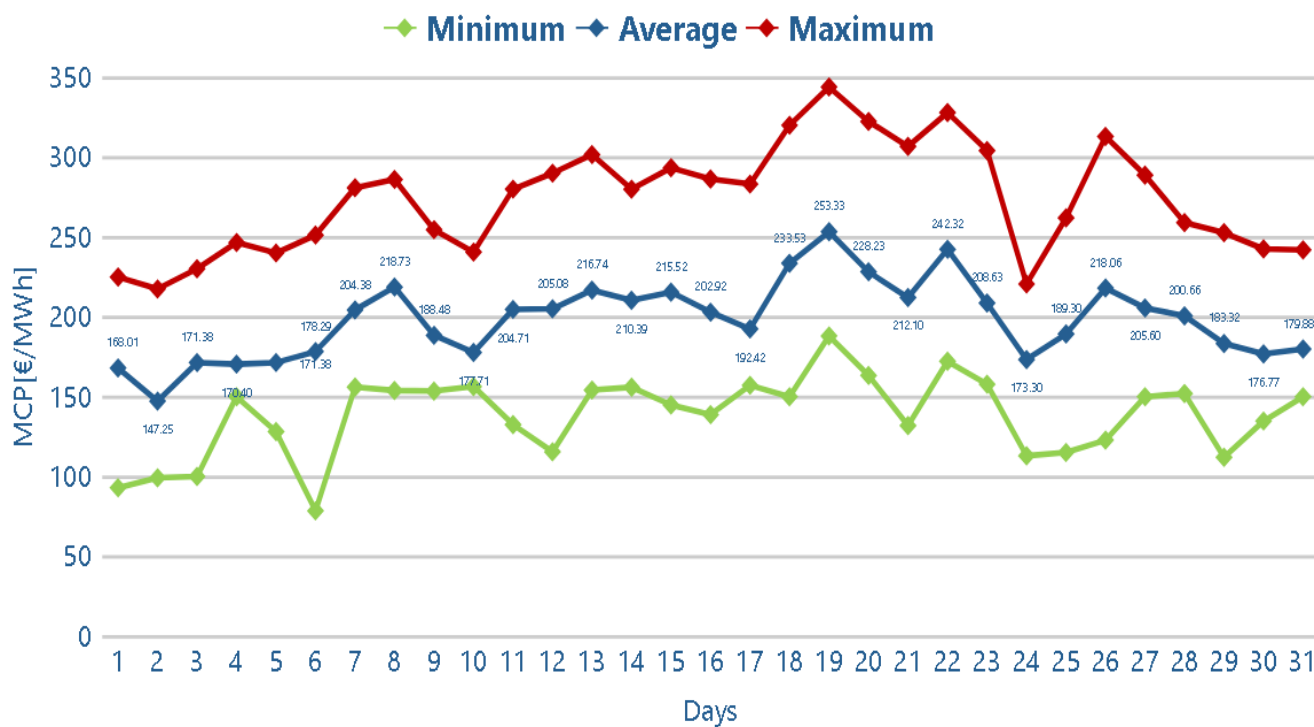
1. DAM

Market Clearing Price (MCP)

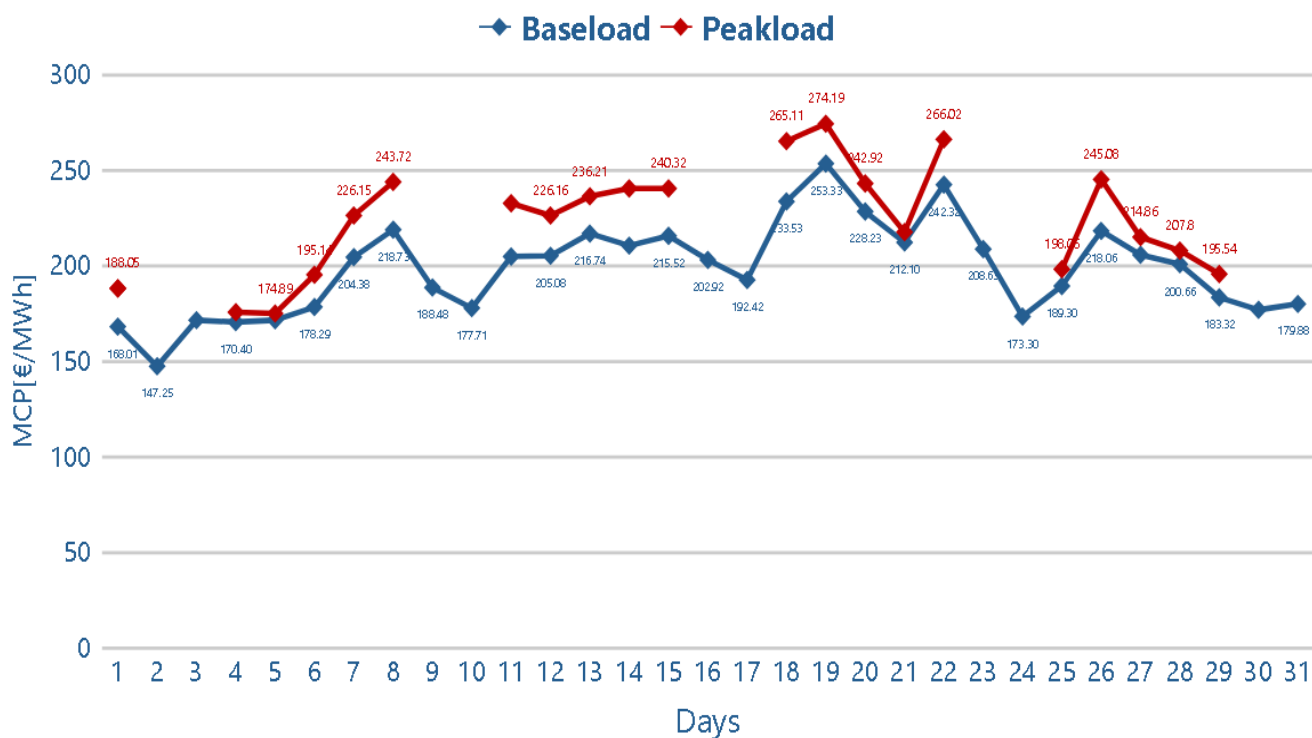
Volumes, technologies and order types

Interconnections

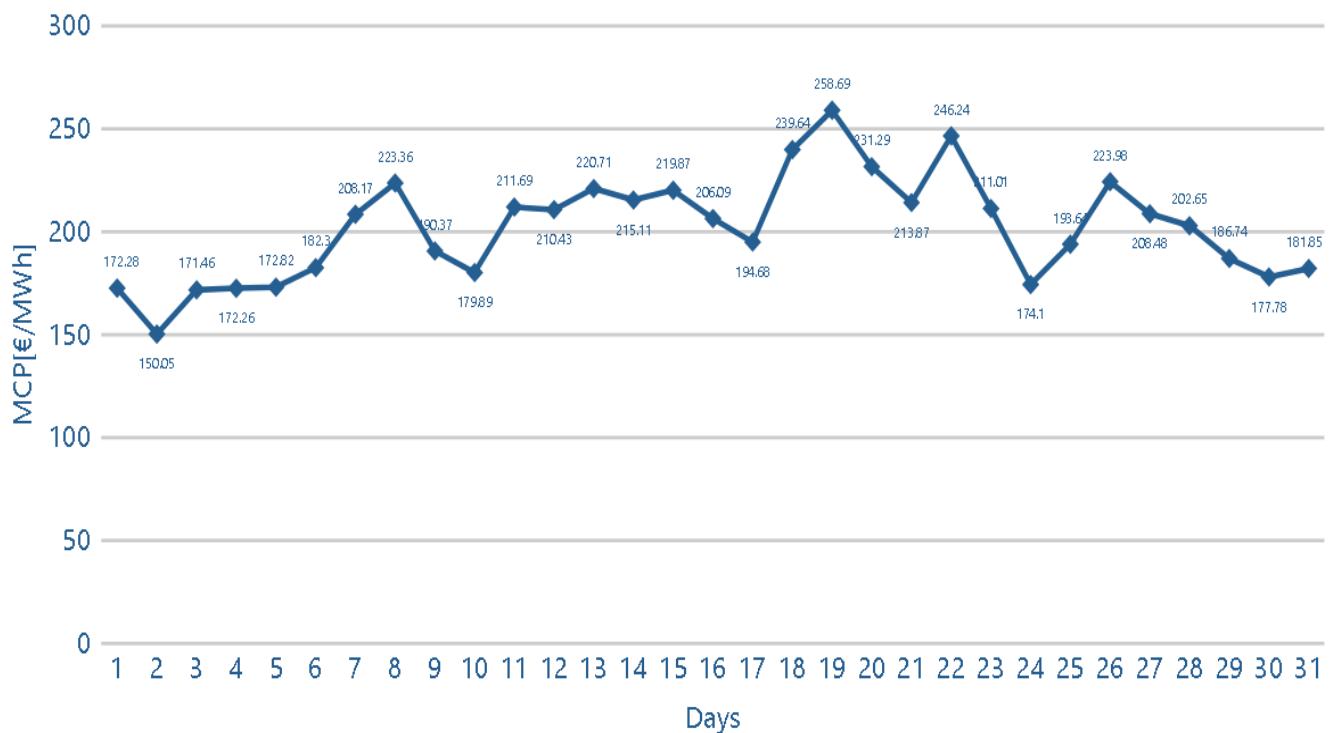
1.1. Daily MCP data of GR BZ



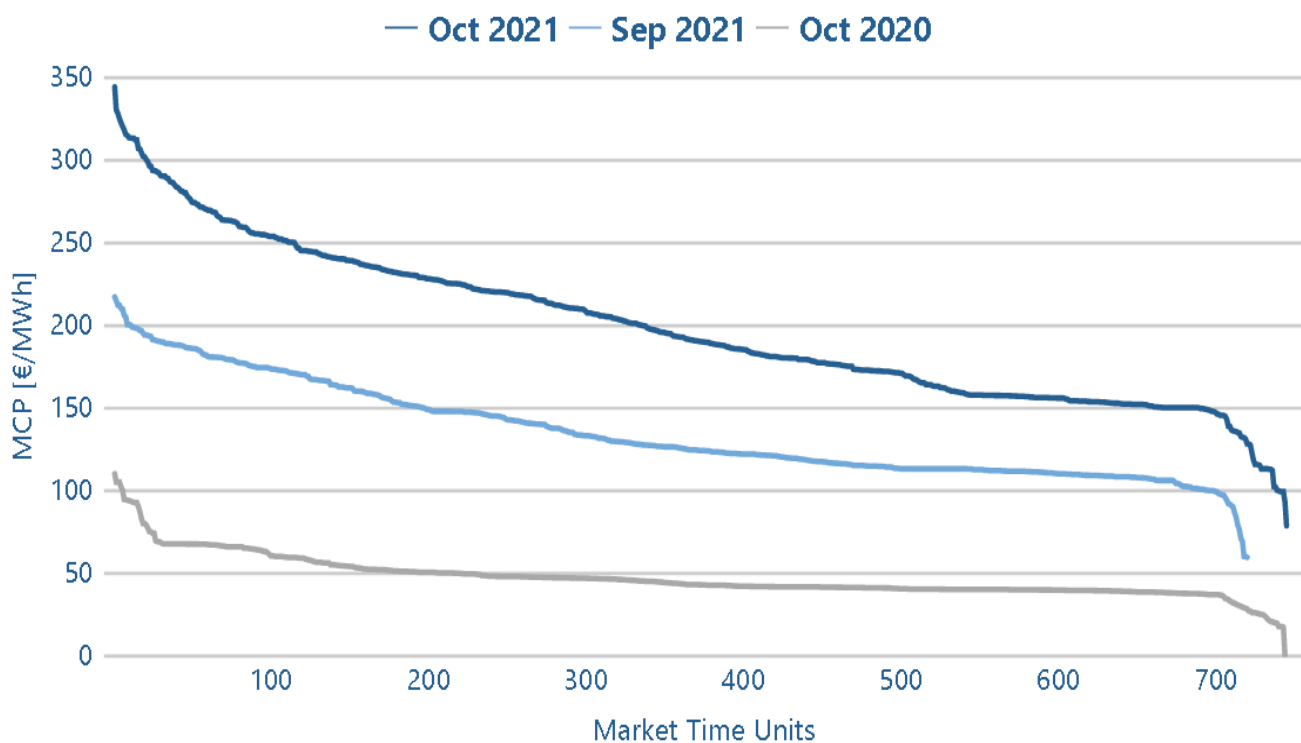
1.2. Daily average prices



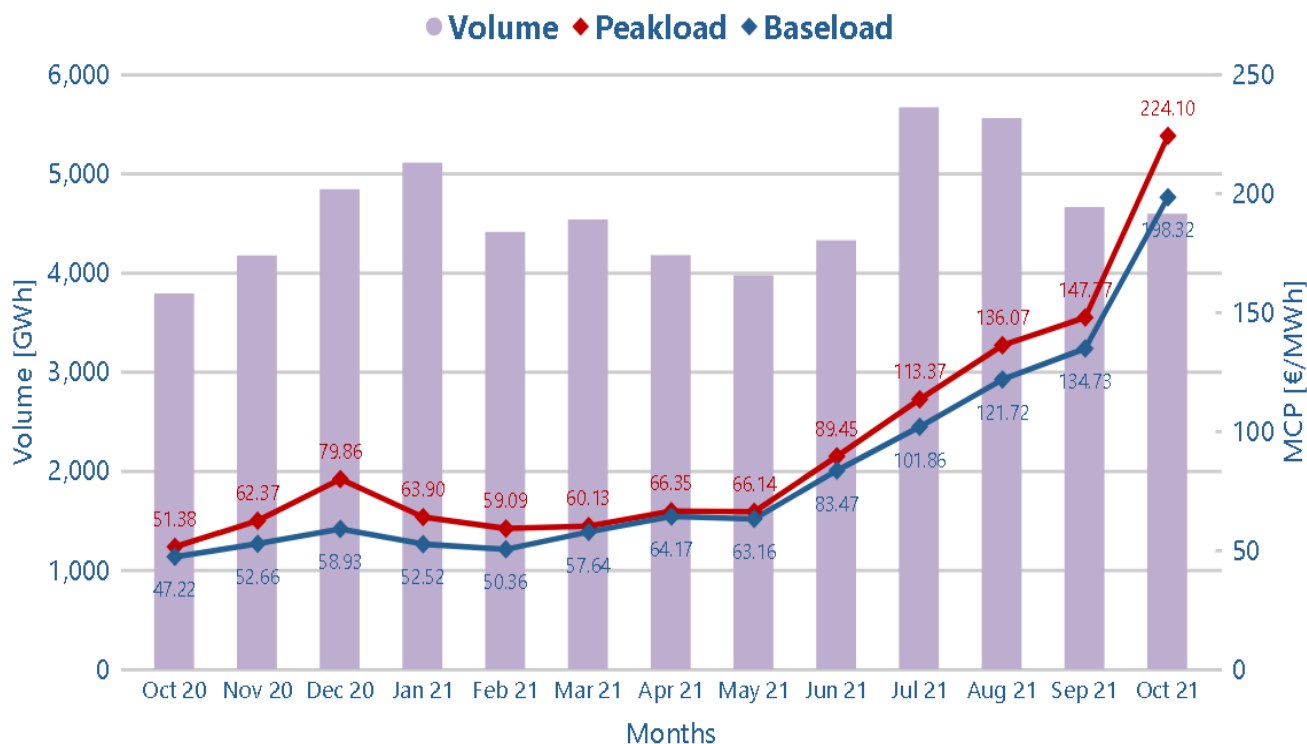
1.3. Daily weighted average baseload price



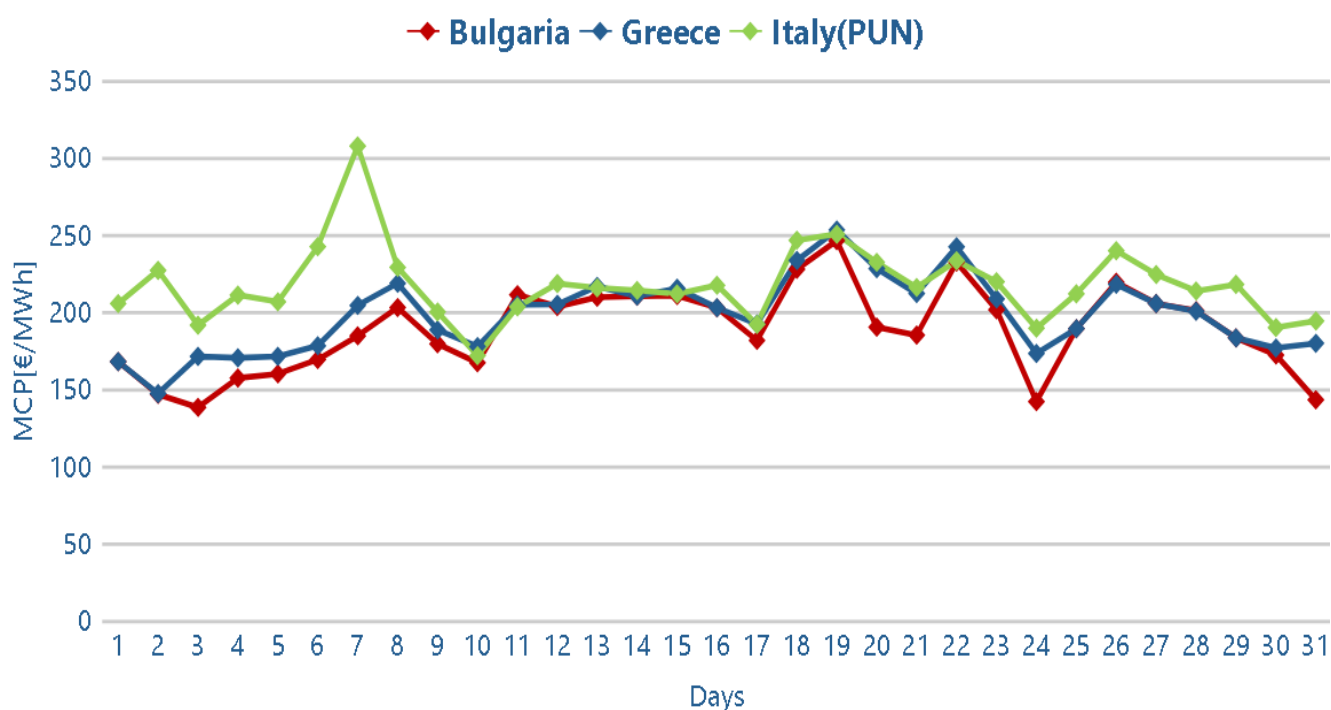
1.4. MCP duration curve



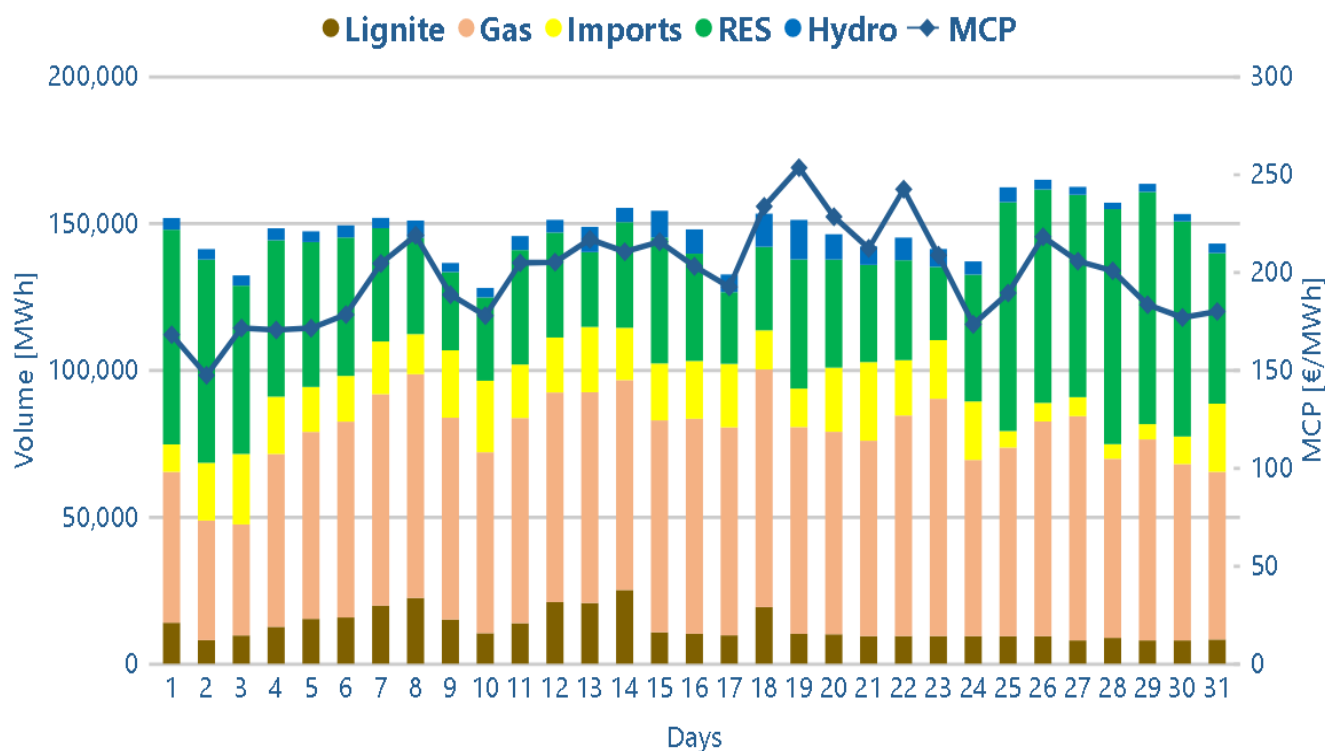
1.5. Monthly volume and average prices



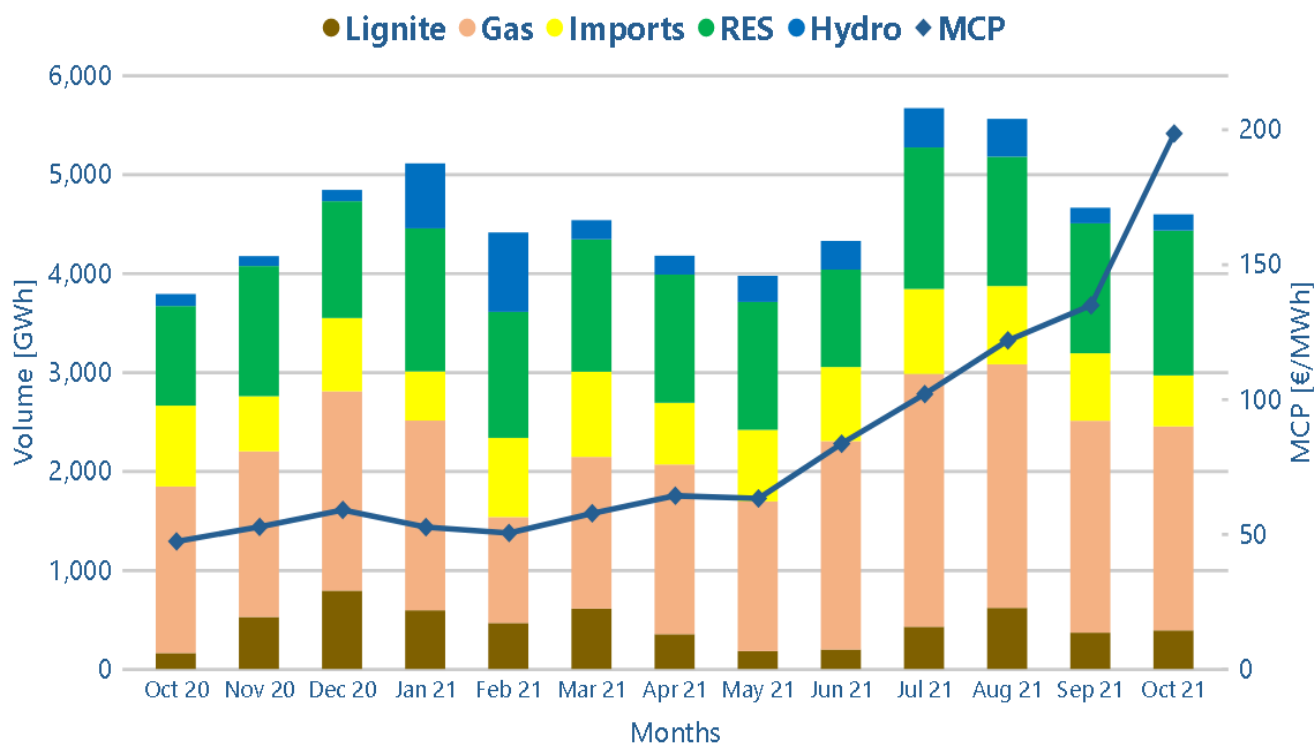
1.6. Daily average MCP of GR, IT, BG



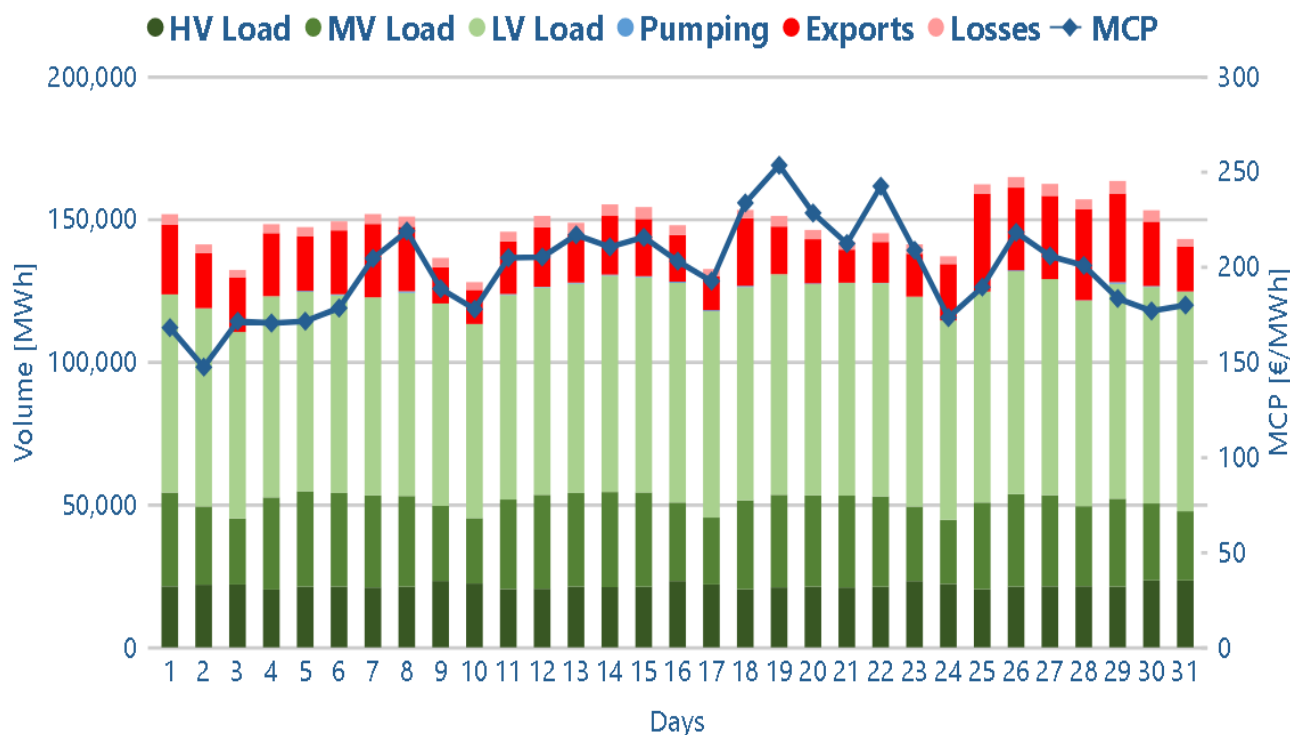
1.7. Volume mix of sell side per day



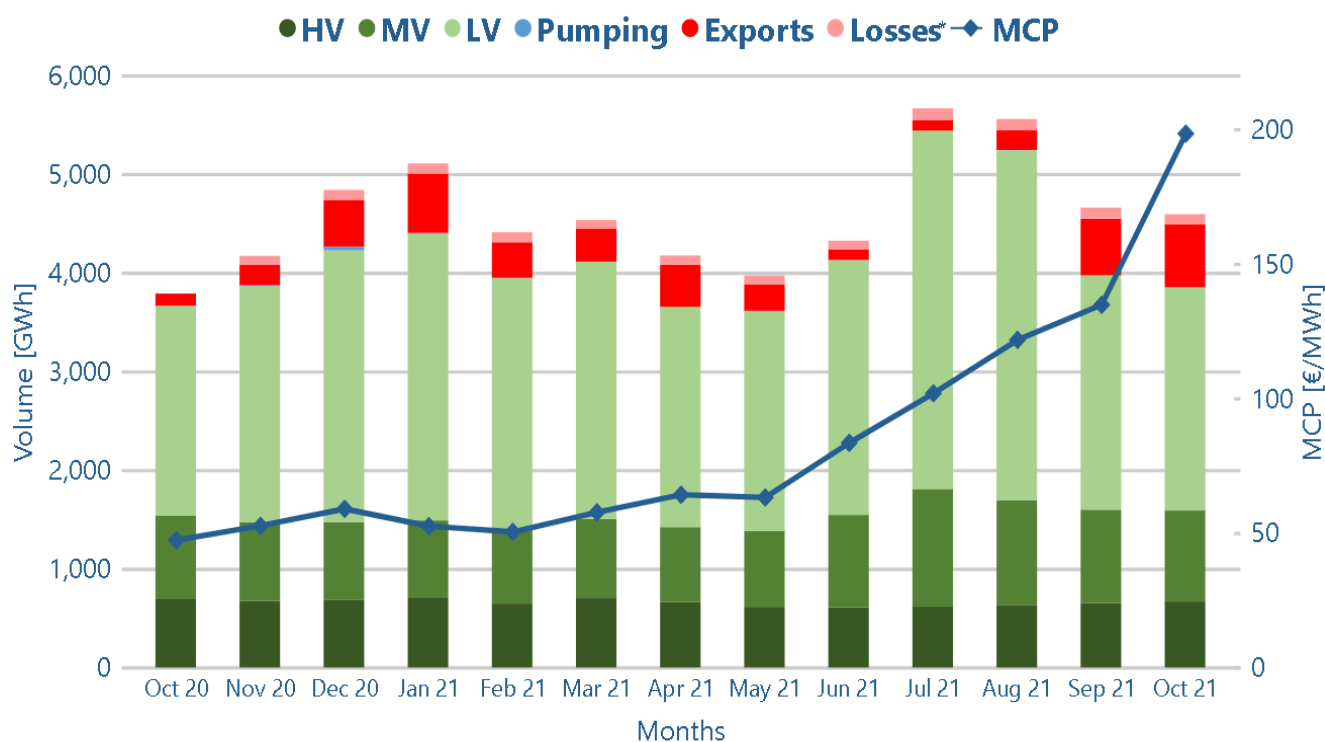
1.8. Volume mix of sell side per month



1.9. Volume mix of buy side per day



1.10. Volume mix of buy side per month



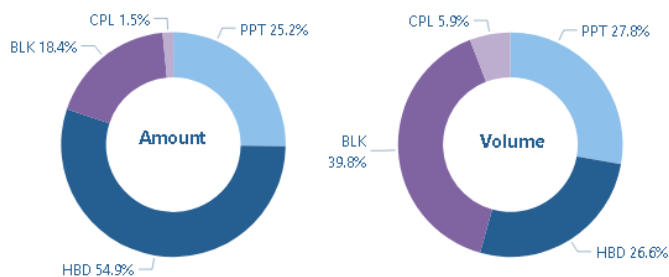
*Data for losses are considered from November 2020

1.11. Table with MCP and volume per month

Year	Month	Minimum MCP [€/MWh]	Average MCP [€/MWh]		Maximum MCP [€/MWh]	Peakload MCP [€/MWh]		Volume [Gwh]
2020	October	0.00	47.22	↗ 1%	110.01	51.38	↘ -6%	3,789
2020	November	17.03	52.66	↑ 12%	110.14	62.37	↑ 21%	4,172
2020	December	-0.01	58.93	↑ 12%	140.01	79.86	↑ 28%	4,840
2021	January	1.50	52.52	↓ -11%	98.02	63.90	↓ -20%	5,109
2021	February	-0.01	50.36	↘ -4%	90.96	59.09	↘ -8%	4,411
2021	March	0.00	57.64	↑ 14%	110.60	60.13	↗ 2%	4,535
2021	April	10.40	64.17	↑ 11%	101.73	66.35	↑ 10%	4,176
2021	May	0.00	63.16	↘ -2%	104.13	66.14	↘ -0%	3,972
2021	June	38.88	83.47	↑ 32%	144.64	89.45	↑ 35%	4,325
2021	July	48.79	101.86	↑ 22%	160.37	113.37	↑ 27%	5,667
2021	August	62.71	121.72	↑ 19%	208.12	136.07	↑ 20%	5,558
2021	September	59.50	134.73	↑ 11%	216.94	147.77	↗ 9%	4,660
2021	October	78.56	198.32	↑ 47%	344.00	224.10	↑ 52%	4,594

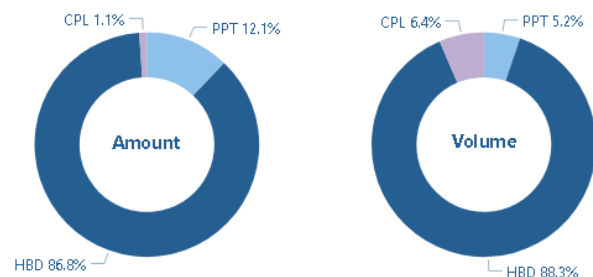
1.12. Trades per Order type

Sell Side



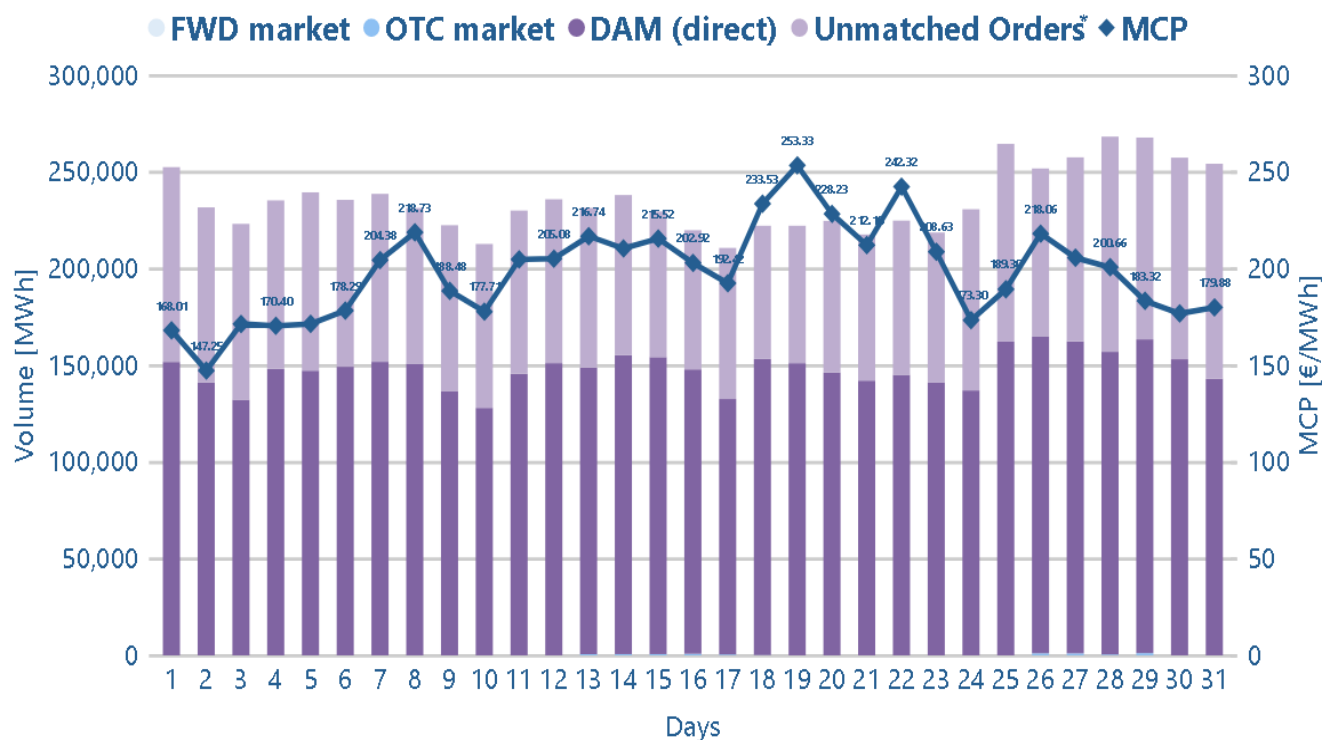
	PPT	HBD	BLK	CPL
Amount	12043	26165	8755	734
Volume [GWh]	1277	1220	1828	269

Buy Side



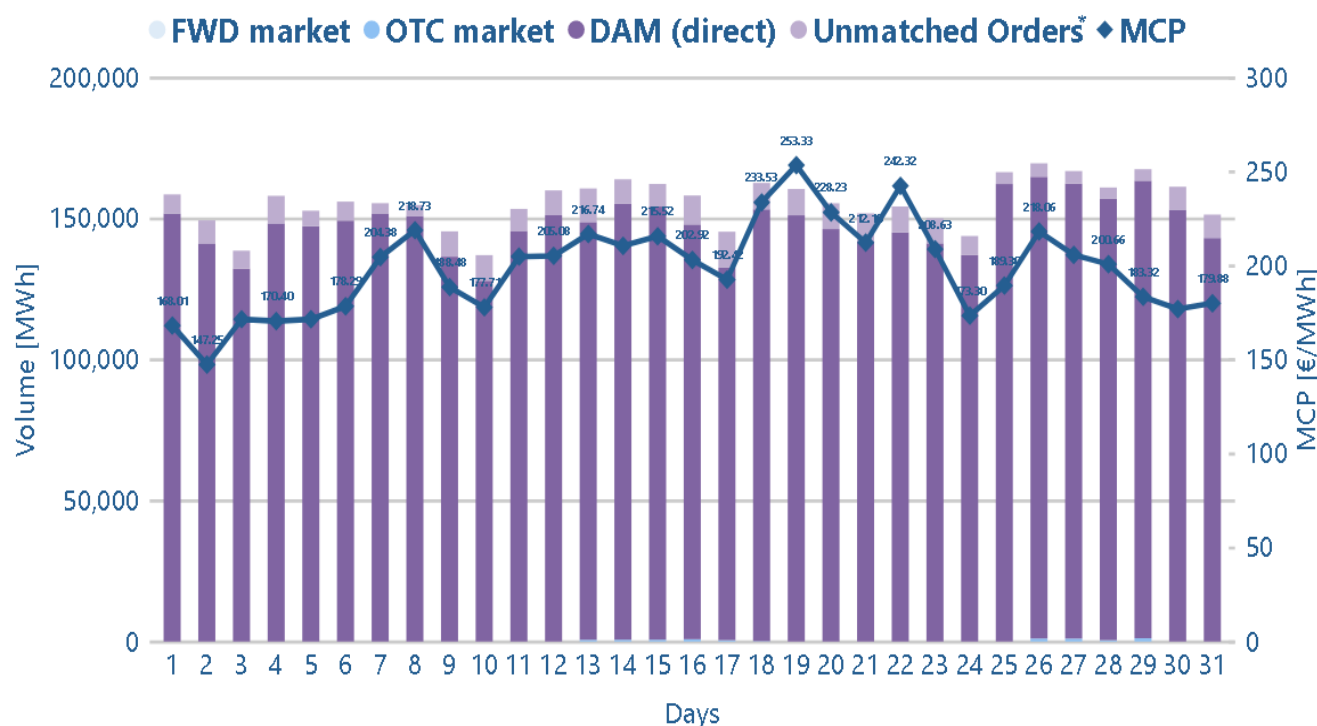
	PPT	HBD	CPL
Amount	8252	59431	756
Volume [GWh]	240	4058	296

1.13. Total volume and traded volume per Market Source of sell orders



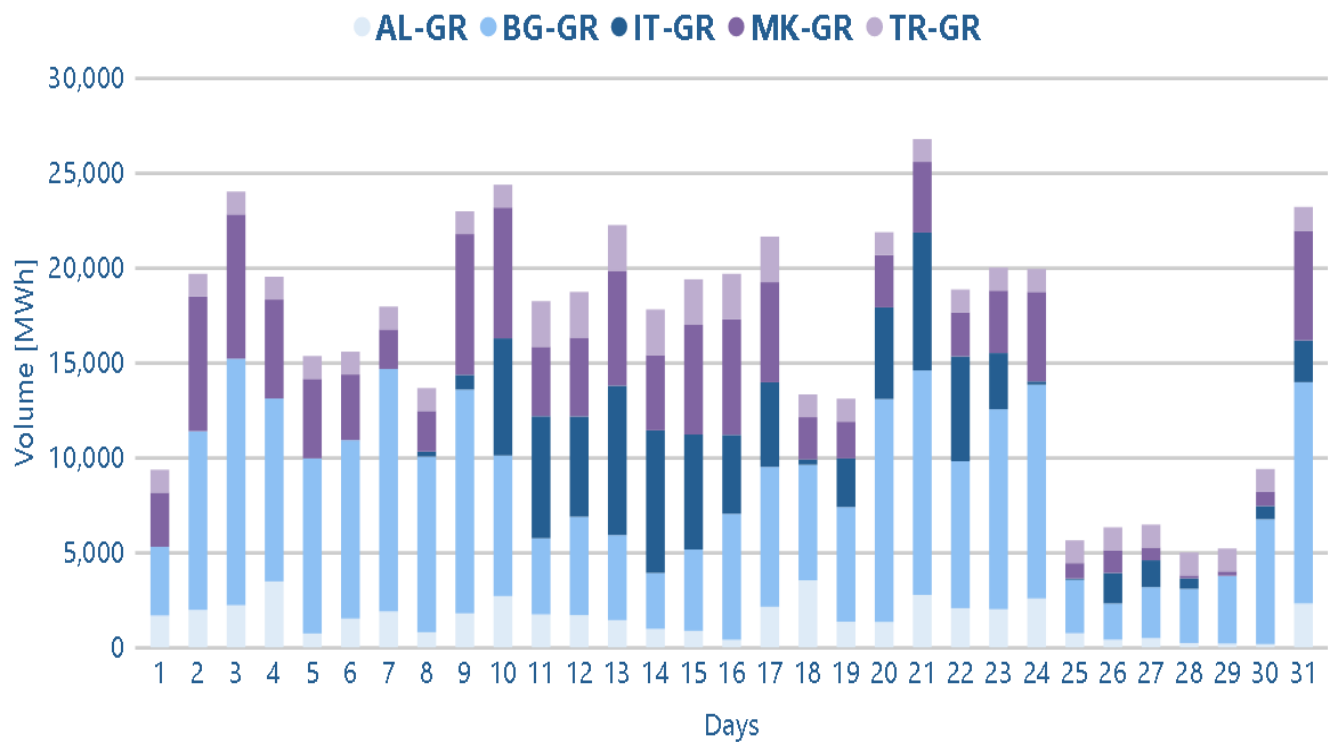
*The Unmatched Orders include all sell orders that have not been included in the algorithm (excluding block orders).

1.14. Total volume and traded volume per Market Source of buy orders

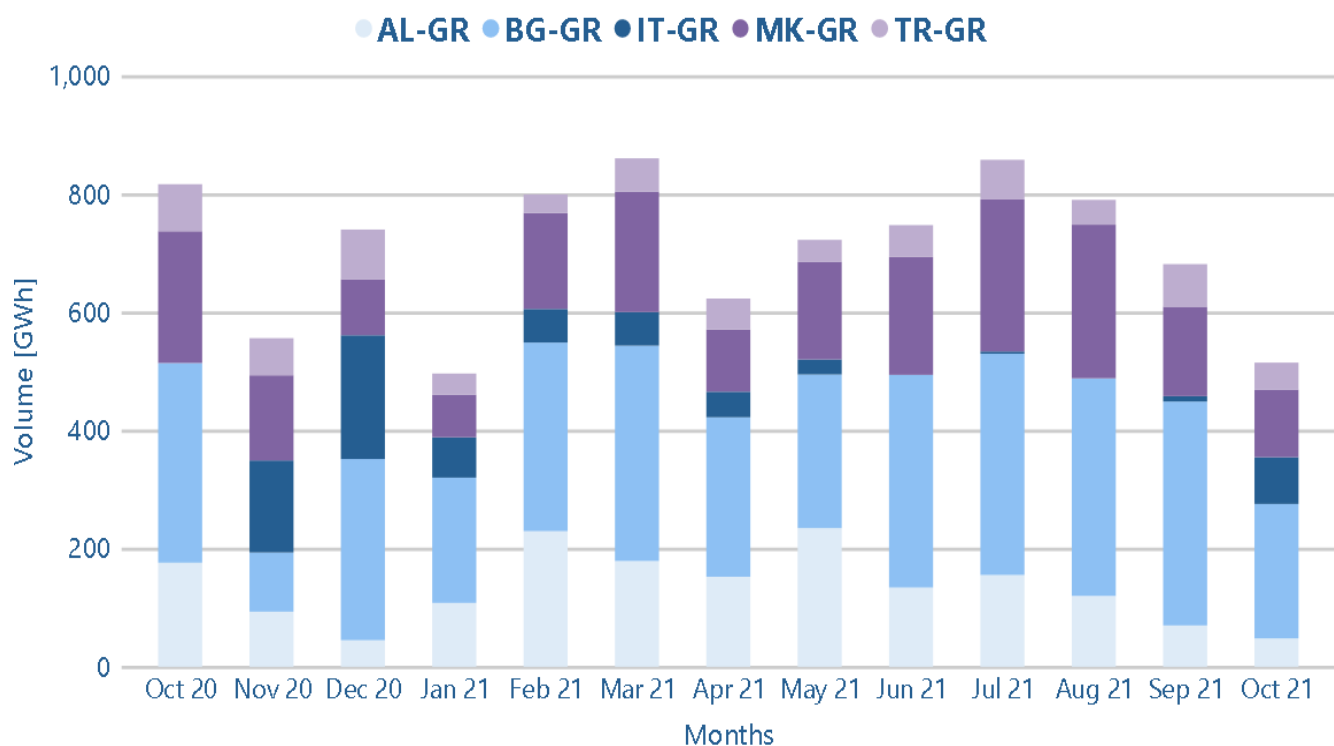


*The Unmatched Orders include all buy orders that have not been included in the algorithm.

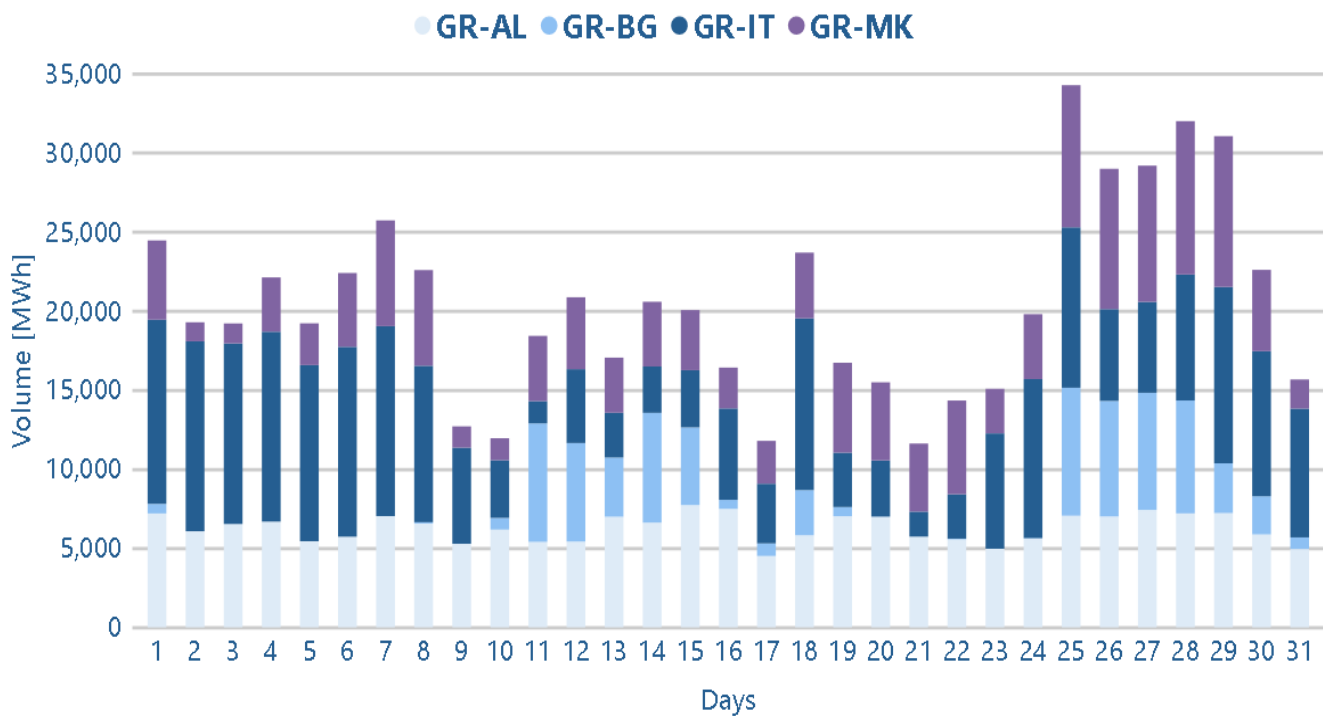
1.15. Cross Border volume · Imports per day



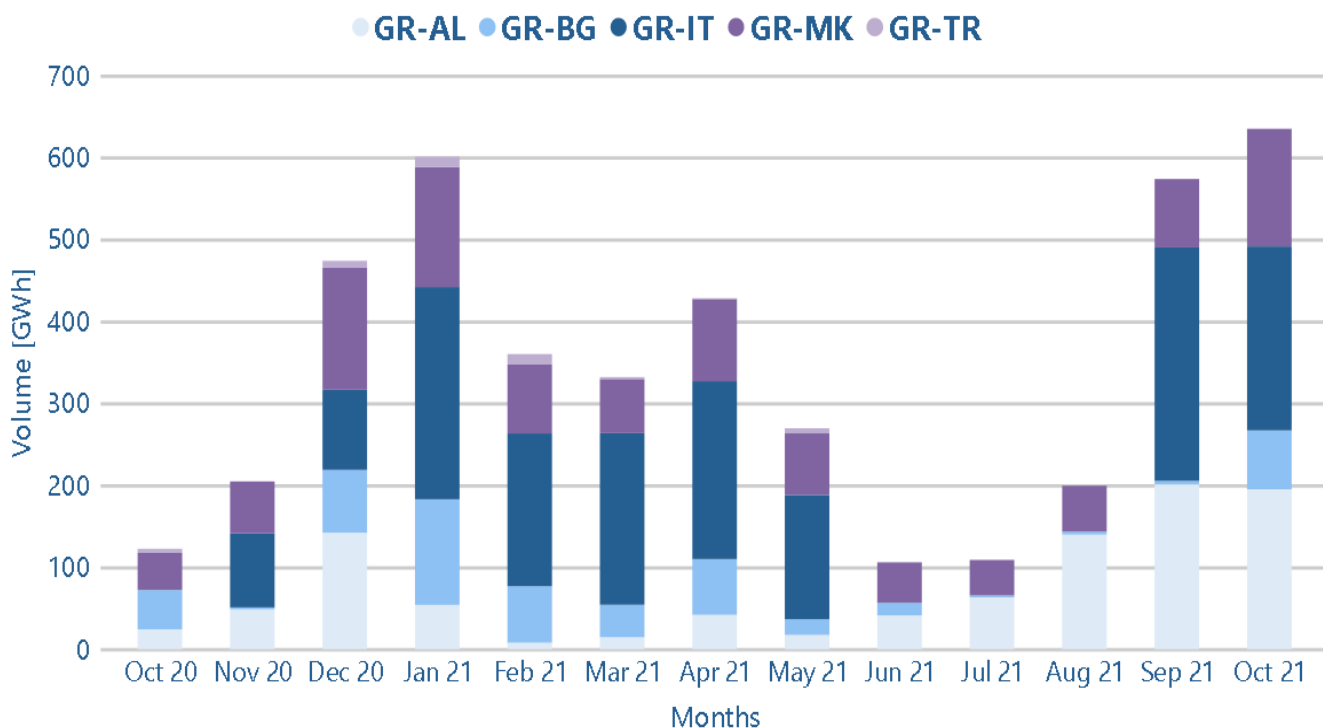
1.16. Cross Border Volume · Imports per month



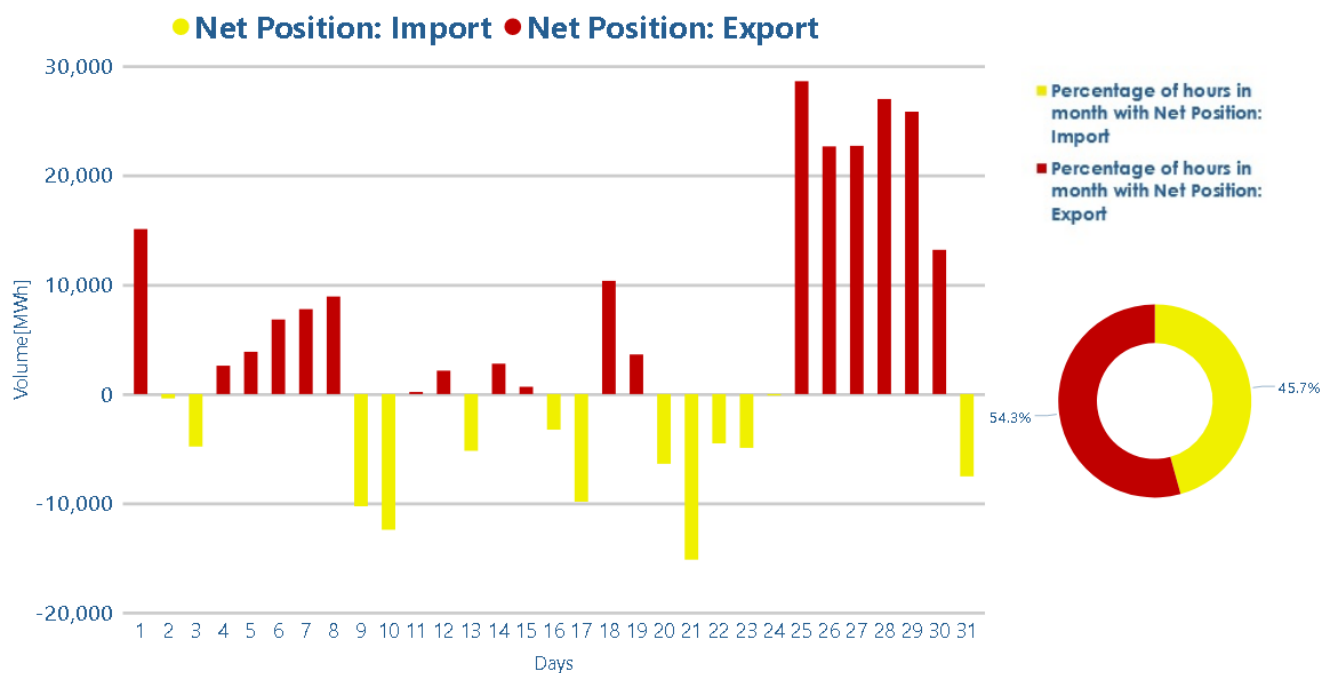
1.17. Cross Border volume · Exports per day



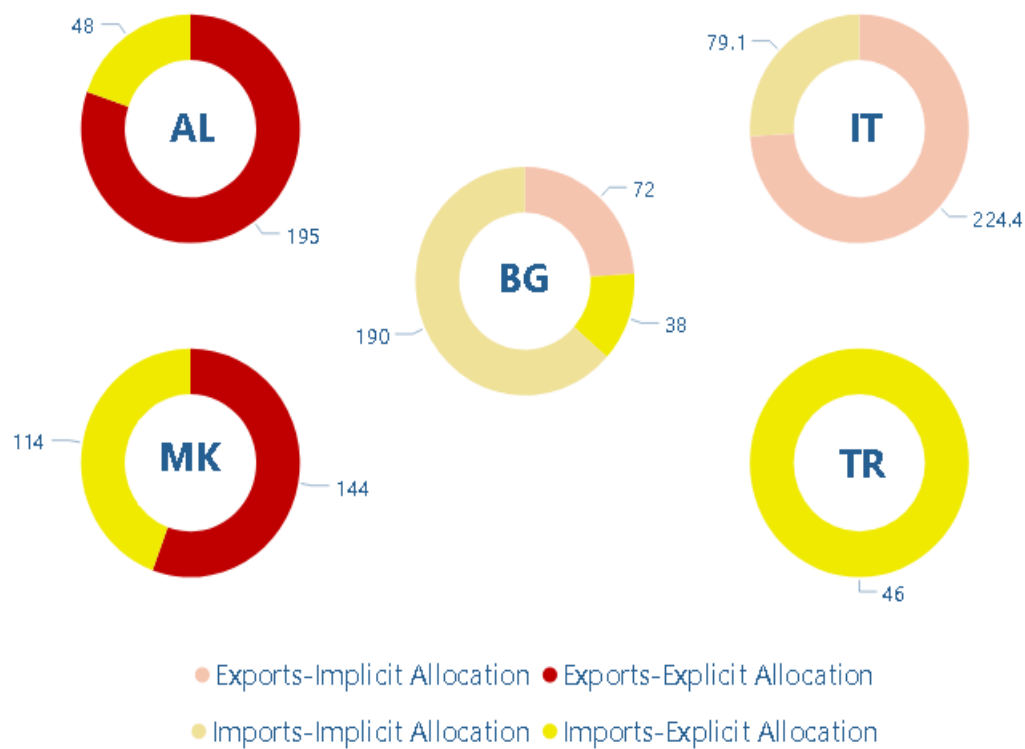
1.18. Cross Border Volume · Exports per month



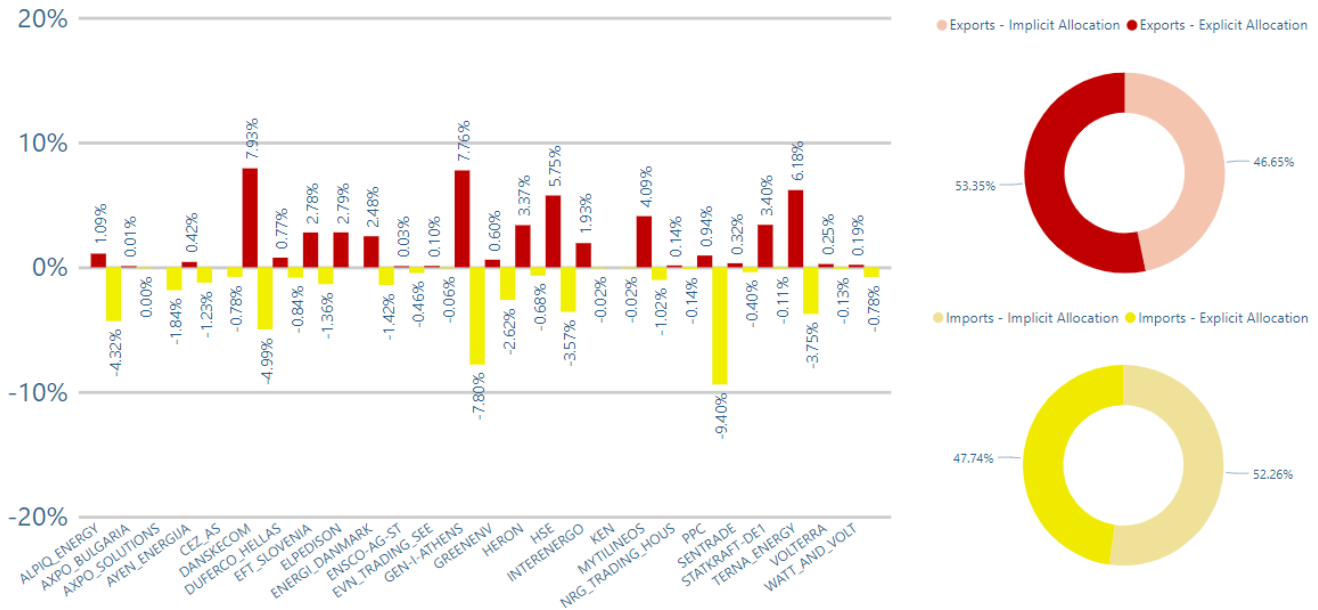
1.19. Net position of all cross border flows



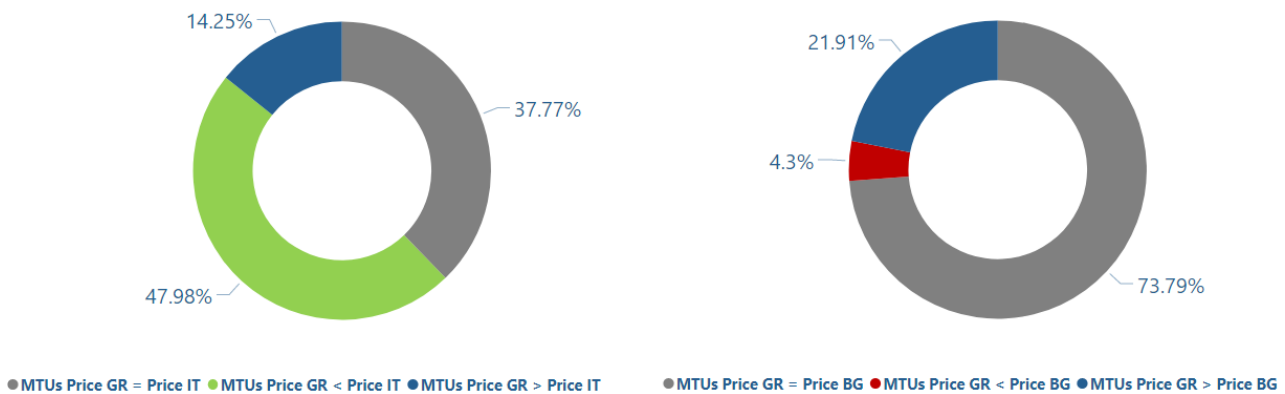
1.20. Cross Border Volumes (GWh) per Border



1.21. Market Shares of Imports and Exports per Market Participant



1.22. Price Coupling Data

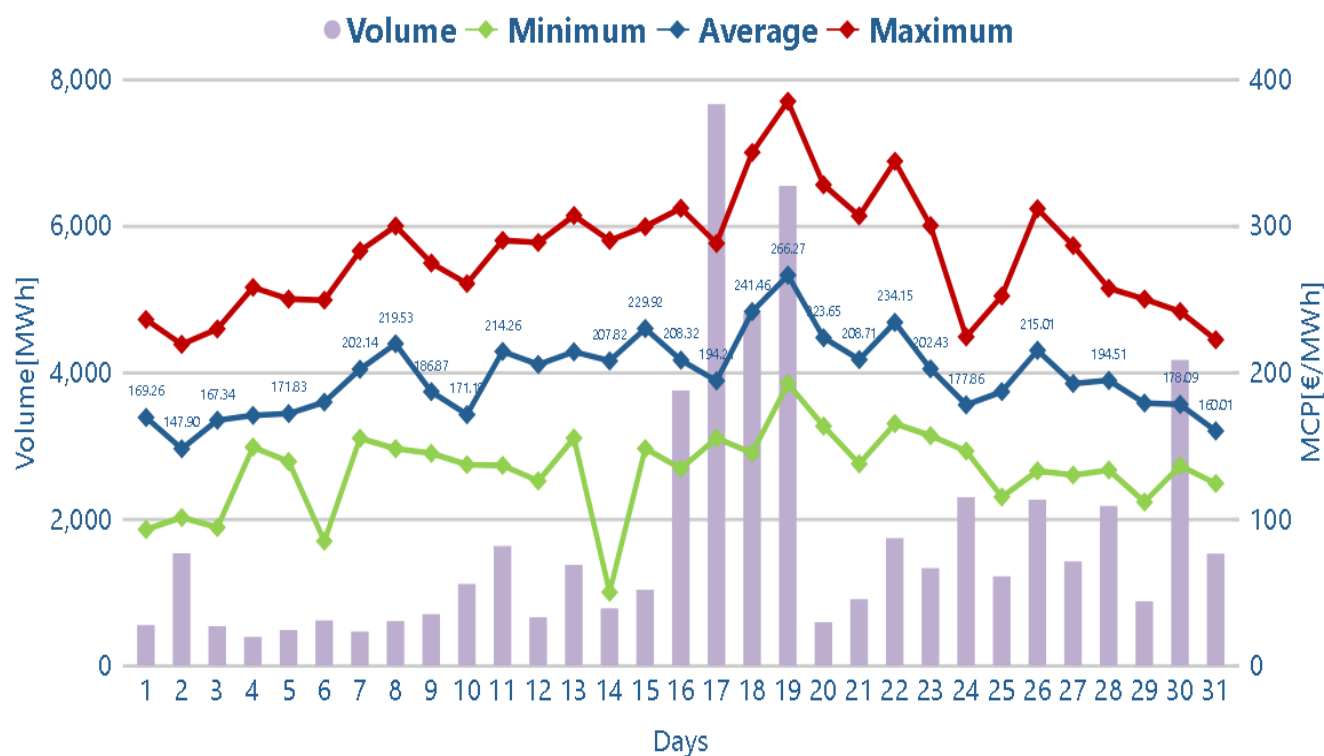


2. IDM

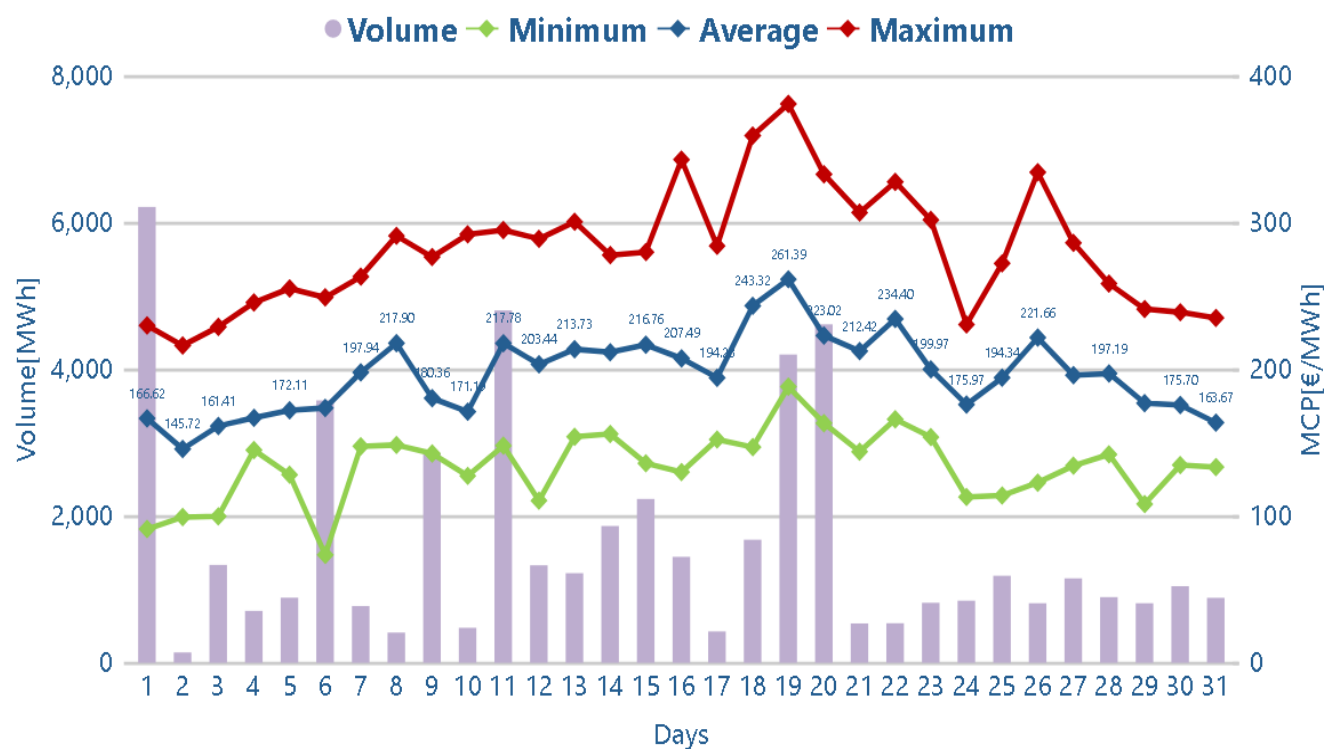
Market Clearing Prices (MCP)

Volumes, technologies and order types

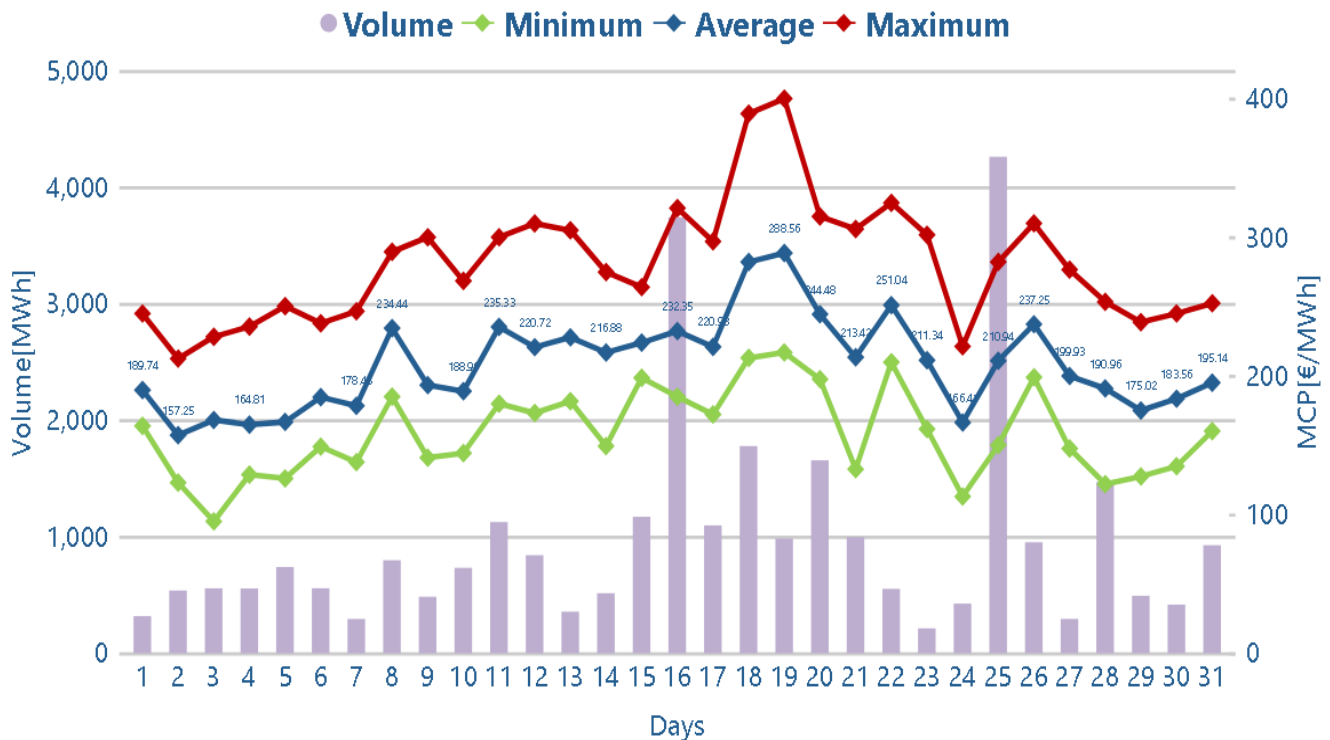
2.1. Daily MCP and volume · CRIDA1



2.2. Daily MCP and volume · CRIDA2



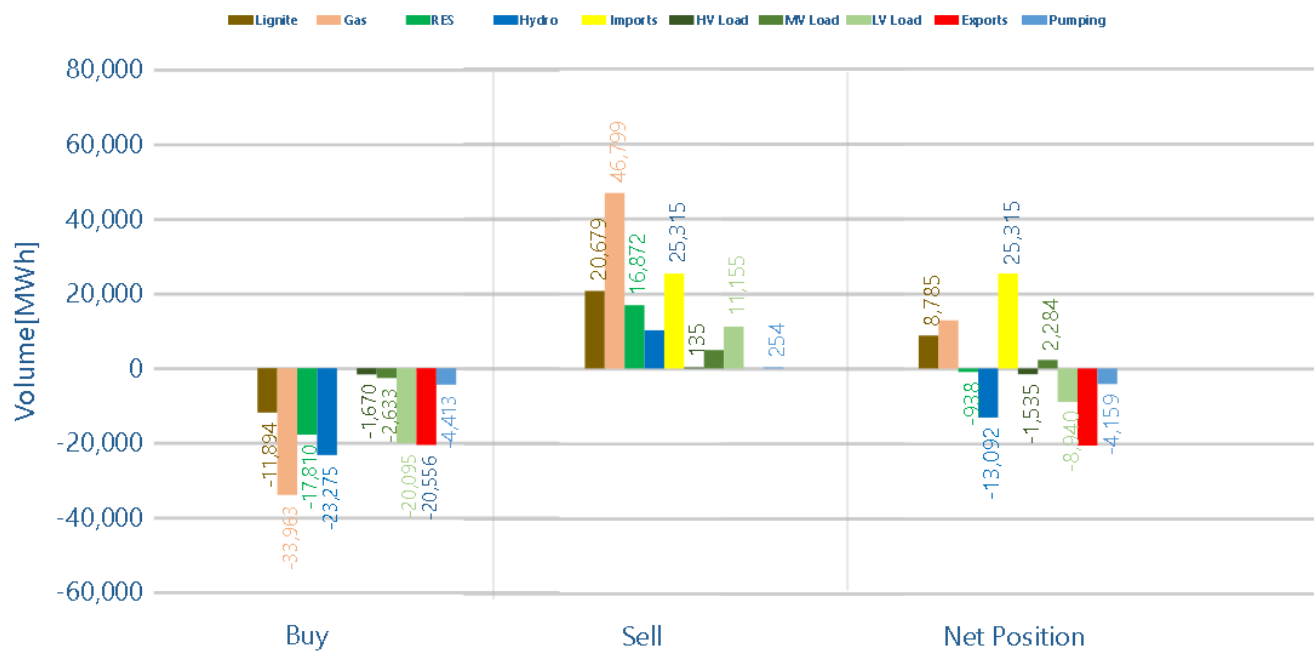
2.3. Daily MCP and volume · CRIDA3



2.4. Table with MCP and volume

Year			2020	2020	2021	2021	2021	2021	2021	2021	2021	2021	2021	2021
Month			Nov	Dec	Jan	Feb	Mar	Apr	May	Jun	Jul	Aug	Sep	Oct
CRIDA1	Price [€/MWh]	min	5.1	-1.2	0	-1.01	3.01	5	-7.90	21.34	10	48.43	58.53	50
		avg	67.24	60.26	53.57	50.67	55.64	63.17	62.53	82.97	97.68	118.18	133.95	197.39
		max	318.94	180	150	250	107.21	111.73	120	160	181.17	230	246.54	385
	Volume [MWh]	55,175	50,768	57,322	52,271	43,218	37,803	28,192	42,449	38,215	49,305	34,980	55,735	
CRIDA2	Price [€/MWh]	min	16.34	-10	-19.92	-8	1	5	-0.01	5	52.10	41.91	54.51	73.56
		avg	66.24	59.09	49.90	54.32	56.82	64.88	63.12	83.62	100.91	119.02	131.18	196.57
		max	314.82	238.33	137.16	150	120	120	102.13	149.90	190	212.38	240	381
	Volume [MWh]	23,215	22,673	23,941	14,069	25,279	16,966	14,572	31,511	18,832	23,234	30,779	50,719	
CRIDA3	Price [€/MWh]	min	0	-16.09	0.01	-5	3	10.50	-3	31.88	48.59	64.91	55.06	95.06
		avg	71.28	54.98	48.07	54.52	59.11	66.80	63.52	87.63	111.27	128.60	136.73	208.22
		max	350	250	115	150	110.22	109.99	98.35	160.80	176	211	249.49	400
	Volume [MWh]	14,057	10,043	19,794	13,544	13,979	9,712	11,312	15,578	26,526	25,097	19,012	29,856	

2.5. Volume mix per side and net position for IDM



3. DAM & IDM · Aggregated Overview

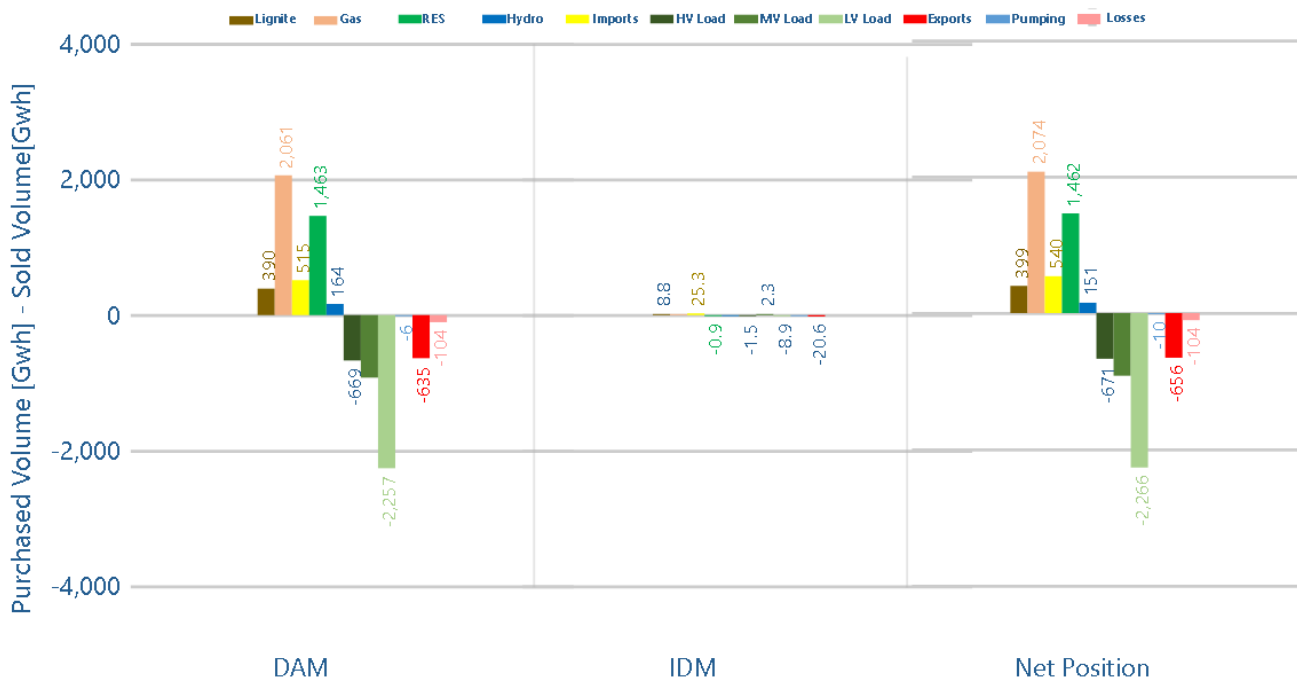
Final Market Schedules

Domestic Production

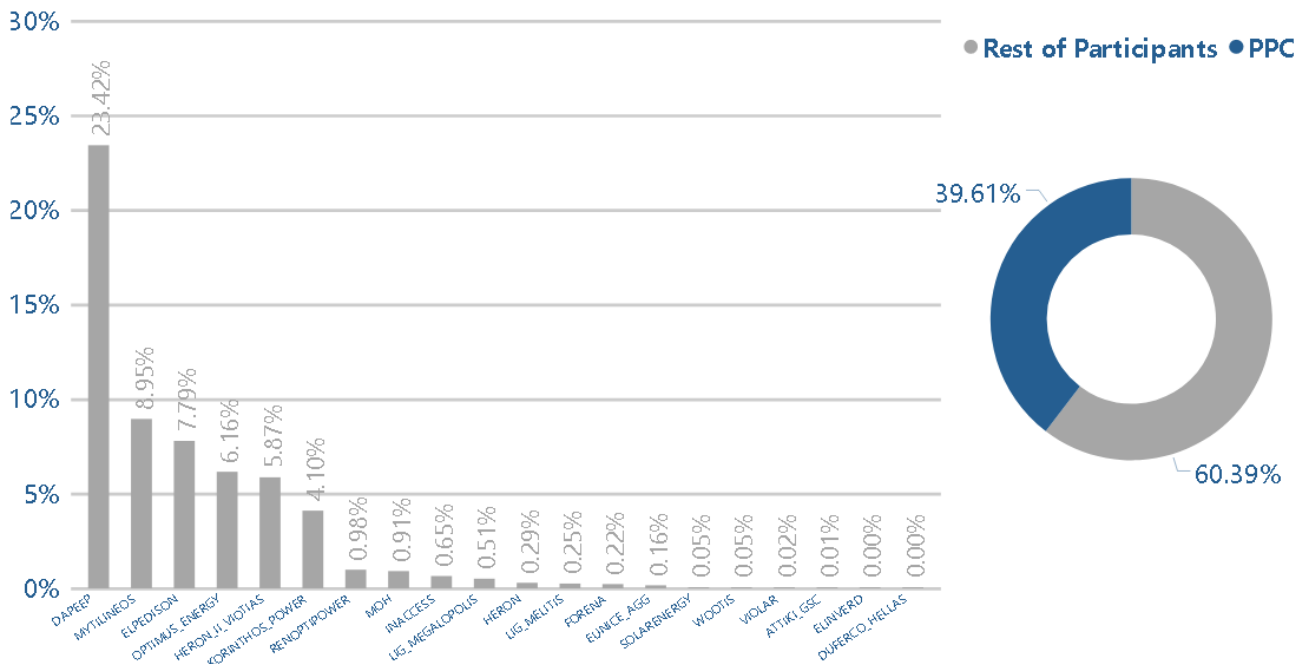
Domestic Consumption

Domestic Consumption per Voltage level

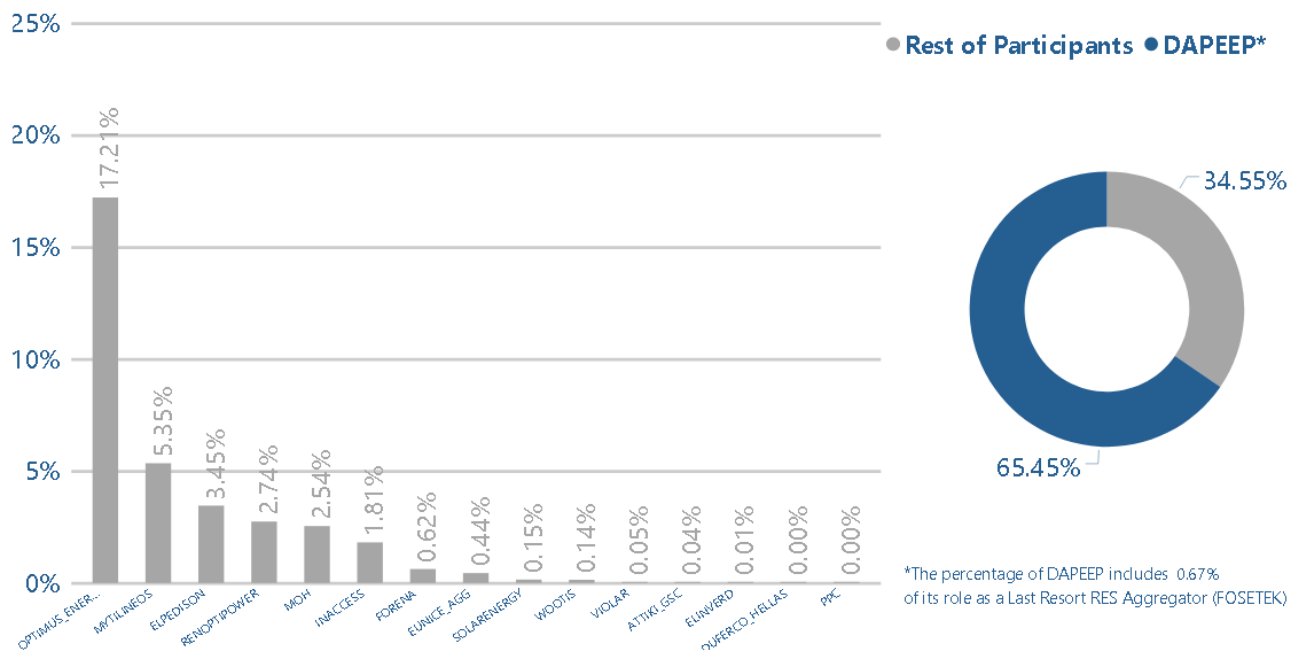
3.1. Market Schedules



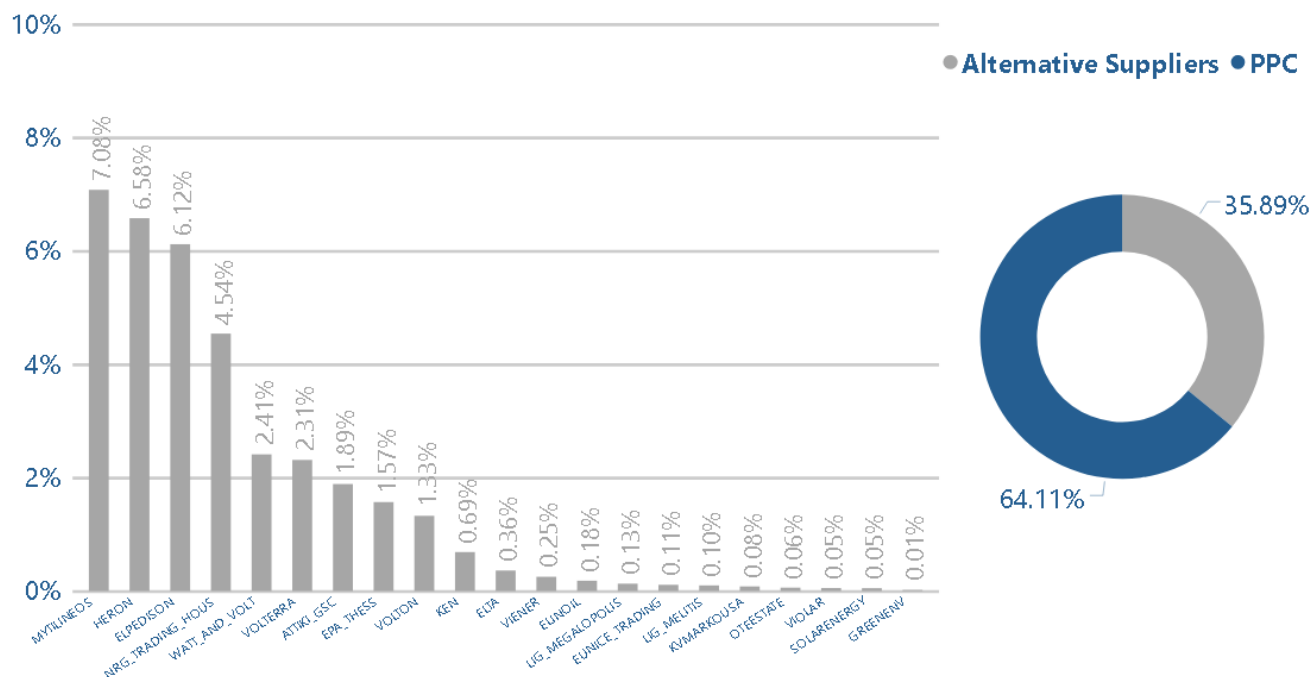
3.2. Final Market Schedule shares for all production units per Market Participant



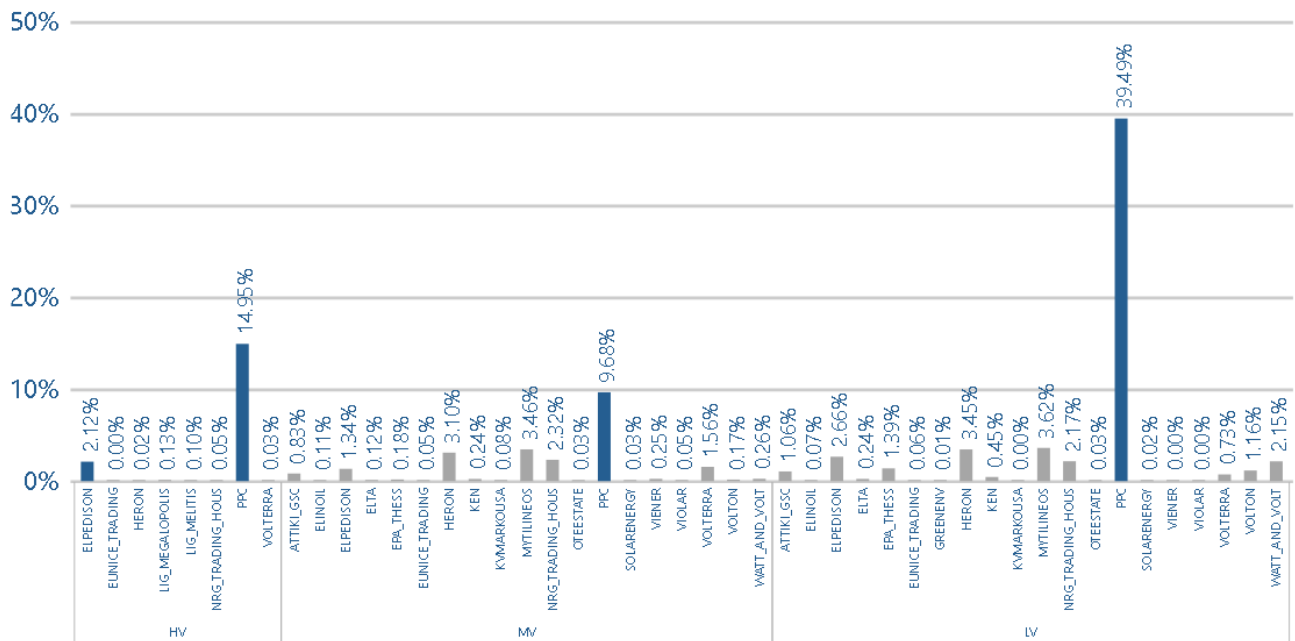
3.3. Final Market Schedule shares for RES production units per Market Participant



3.4. Final Market Schedules shares for domestic load per Market Participant



3.5. Final Market Schedule shares for domestic load per Voltage Level and Market Participant



4. Annex

Definitions

ACRONYM	Definition
GR BZ	Greek Bidding Zone
MCP	Market Clearing Price
NTC	Net Transfer Capacity

Data Sources

Figure 1.5

- Data source for MCP of Italy: <http://www.mercatoelettrico.org/En/Download/DatiStorici.aspx>
- Data source for MCP of Bulgaria: <http://www.ibex.bg/en/market-data/dam/prices-and-volumes/#data-table>

Market Details

- The new Greek electricity market model, using the Pan-European Hybrid Electricity Market Integration Algorithm (EUPHEMIA), was launched from Delivery Day 01/11/2020
- Market Time Units of GR BZ are in CET-hr
- Intraday Market of GR BZ consists of three Complementary Regional IntraDay Auctions (CRIDAs).

*In this second version, figures for chart 1.22 have been updated to account for rounding differences